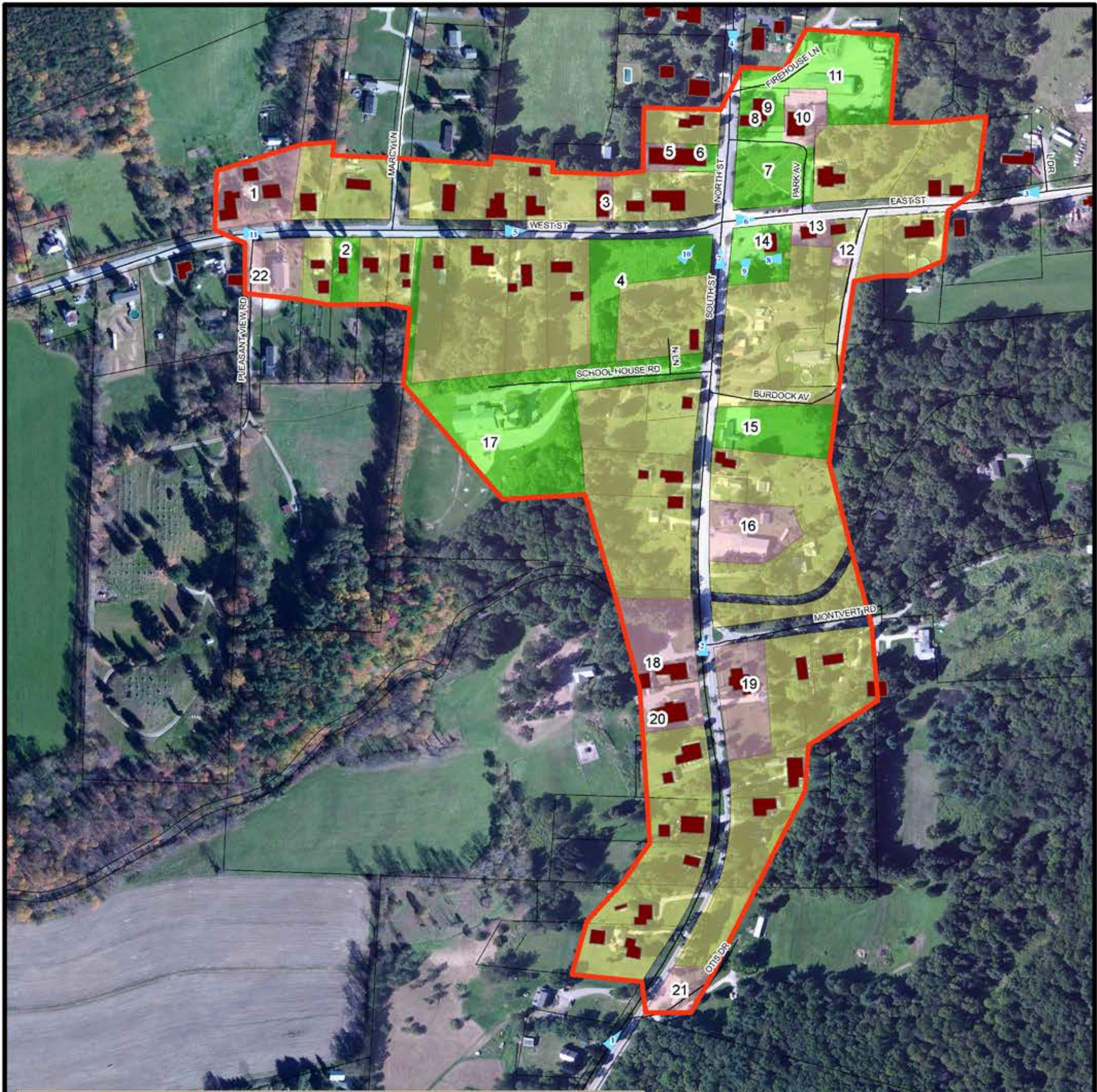


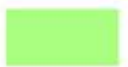





# Middletown Springs Proposed Village Center Designation



-  Proposed Village Designation Boundary
-  Residential
-  Public
-  Commercial or Nonprofit
-  Historic Buildings
-  Photo Location & Direction

Vermont Coordinate System, Transverse Mercator, NAD 85  
For planning purposes only.  
Prepared by: Rutland Regional Planning Commission  
PO Box 965  
Rutland, VT 05702  
www.rutlandrpc.org



June, 2014

0 0.0225 0.045 0.09 0.135 0.18 Miles

**Board Approved**  
**06-23-2014**

- |                                |                                      |                             |   |
|--------------------------------|--------------------------------------|-----------------------------|---|
| 1 Rising Meadows Pottery       | 7 Town Green                         | 13 Grant's Village Store    | 19 The Clock Doctor                       |
| 2 Public Library               | 8 Historic Society Museum            | 14 Town Owned (Brownfields) | 20 Doll & Toy Museum                      |
| 3 Sissy's Kitchen              | 9 Town Office                        | 15 Post Office              | 21 South Street Deli / Best Moon Catering |
| 4 Middletown Springs Cemetery  | 10 Community Church                  | 16 T & K Milk Hauling       | 22 St. Anne's Catholic Church             |
| 5 Green Mountain Timber Frames | 11 Volunteer F.D. & Transfer Station | 17 Elementary School        |   |
| 6 Town Garage                  | 12 Small Engine Repair               | 18 Friends in Adoption      |   |