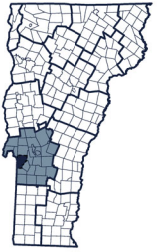


POULTNEY DESIGNATED DOWNTOWN DISTRICT

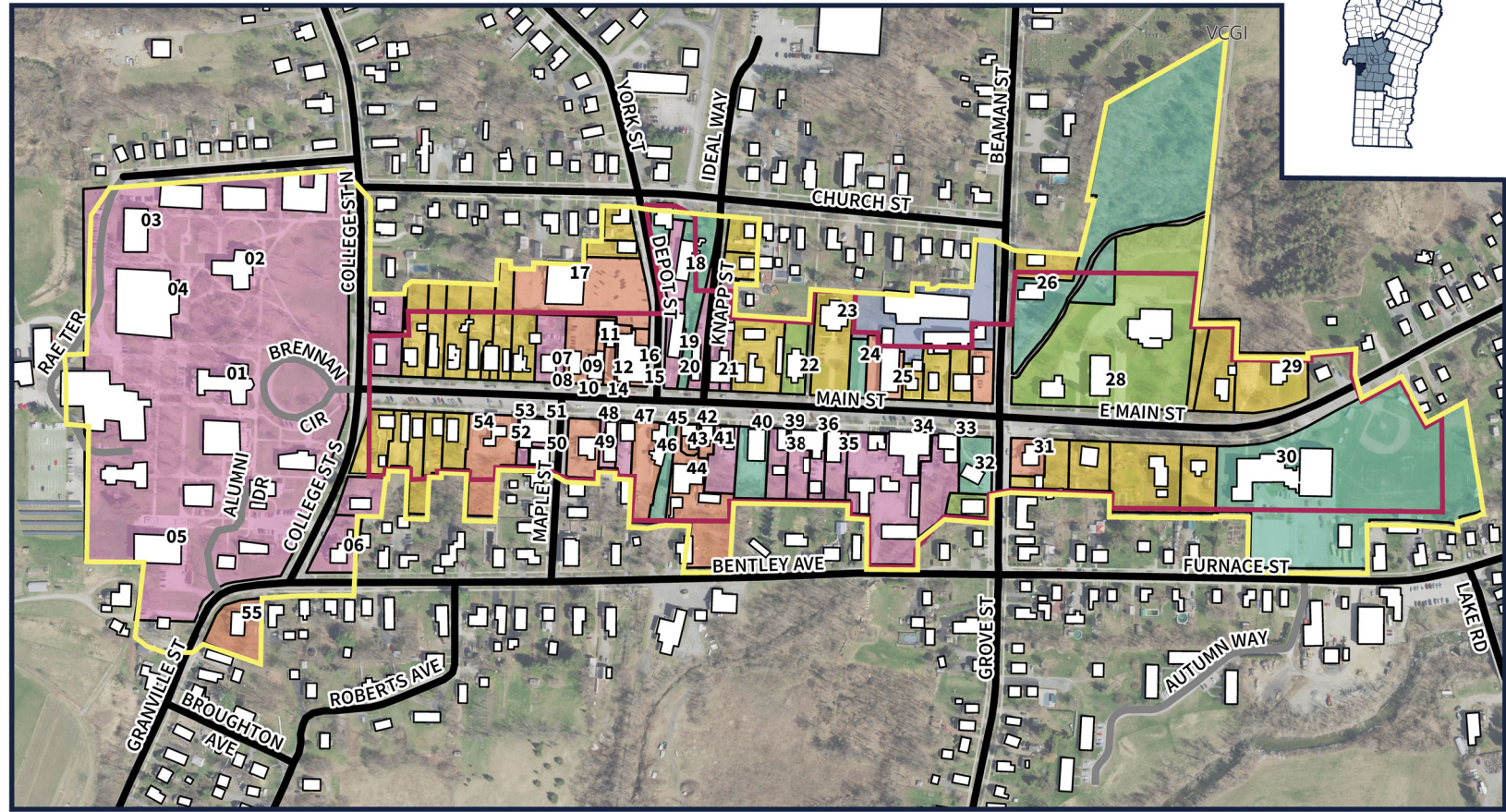


LEGEND

- Designated Downtown District
- National Historic District
- Roads - Public
- Roads - Private
- Buildings

PARCEL TYPE

- Civic/Public
- Commercial
- Industrial
- Mixed Use
- Religious
- Residential



01 GMC - Ames Hall	20 Poultney Pub	39 NorthLand Real Estate
02 GMC - Moses Hall	21 St. David's Anglican Church	40 Post Office
03 GMC - Cree Hall	22 United Methodist Church	41 Donna P. Johnson Physical Therapy
04 GMC - Withey Hall	23 Schoolhouse Apartments	42 Vermont Forest & Field
05 GMC - Griswold Library	24 Slate Quarry Park	43 Original Vermont Store
06 GMC - Meeting House	25 Fair Haven Poultney Auto Supply	44 REclaimED Makerspace
07 Dr. Scovner's Office	26 Stonebridge Visitors Center	45 Lakes & Homes Realty
08 Mars Insurance	27 Leap Frog Nursery School	46 Village Clerk's Office
09 PMNRCD	28 St. Raphael's Catholic Church	47 The Nature Conservancy
10 Slate Valley Trails Office	29 Stone Valley Arts	48 Public Library
11 Full Belly Deli	30 High School	49 Stewart's
12 Loomis Paint	31 Citgo Gas Station	50 The People's Barbershop
13 Everyday Flowers Florist	32 Town Office	51 Laundromat
14 Photography Studio	33 Toad's Burger Bar	52 Poultney House of Pizza
15 Analog Cycles	34 Williams TrueValue Hardware	53 Perry's Main Street Eatery
16 Mel's Place Hair Salon	35 Mart's Sporting Goods	54 Gulf Gas Station
17 Shaw's Supermarket	36 Hermit Hill Books	55 Bentley Bed & Breakfast
18 Shared Memories Shop	37 Toy & Hobby Shop	
19 Lihigh School	38 The Shoppe on Main	



1:6,000

NAD 1983 StatePlane Vermont FIPS 4400

Credits: Nic Stark for the Rutland Regional Planning Commission

Prepared for the Poultney Downtown Revitalization Committee

2/9/2023 8:53 AM

C:\Users\NicStark\Rutland Regional Planning Commission\Towns - Documents\Poultney\Downtown-Village designation\Downtown Designation\2023 Downtown Renewal\Downtown Designation Boundary Map\Designated_Downtown_Boundary_Map\Designated_Downtown_Boundary

