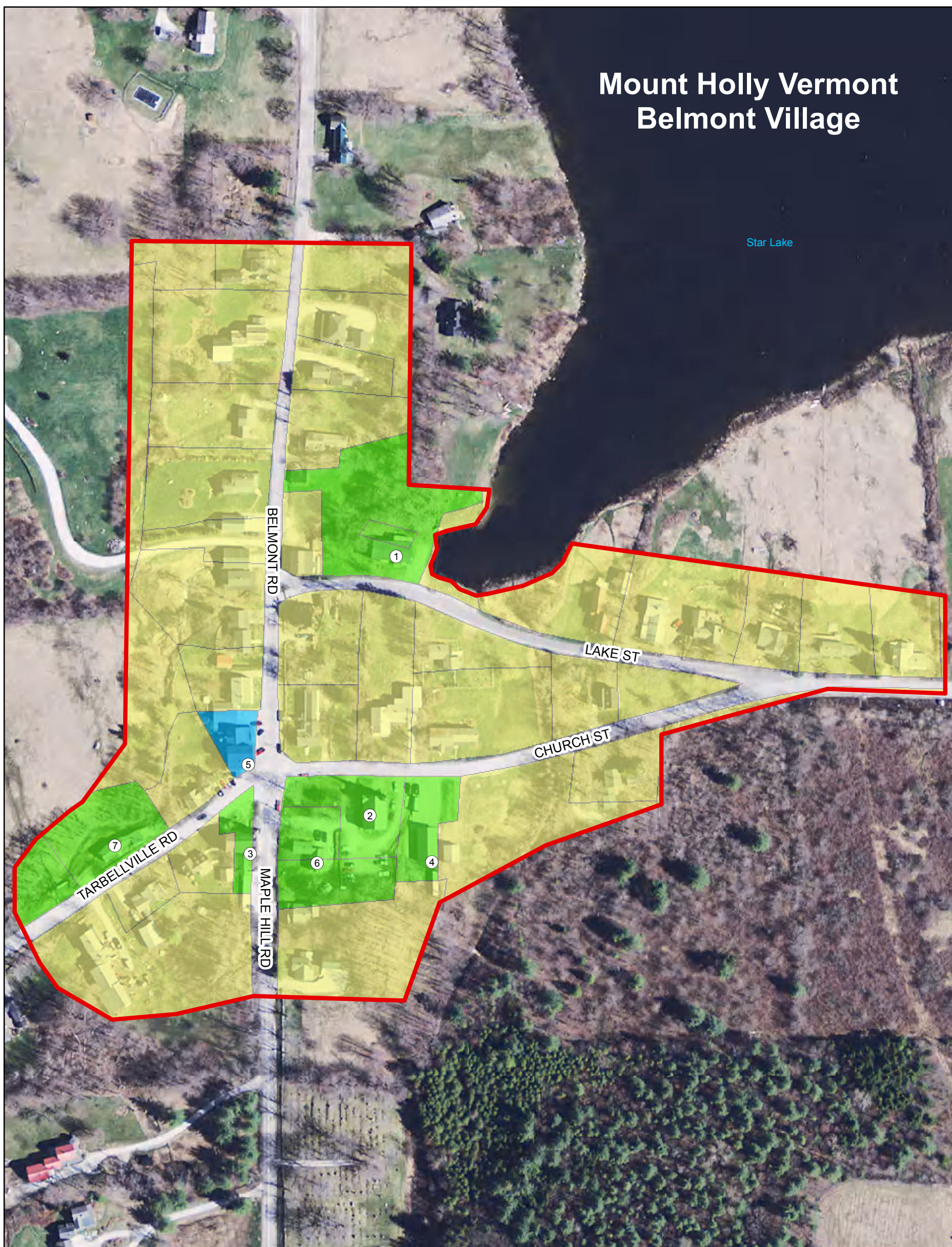


# Mount Holly Vermont Belmont Village



## Significant Buildings

- ⑦ Mount Holly Community Historical Museum, Will White Blacksmith Shop
- ⑥ Mount Holly Community Historical Museum, Perkins House
- ⑤ U.S. Post Office and General Store
- ④ Mount Holly Fire Department
- ③ Mount Holly Town Library
- ② Village Baptist Church
- ① Oddfellows Hall

## Land Use

- Civic
- Mixed Use
- Residential
- Village Boundary

Date: 1/29/2016



Image data: 2011 State of Vermont  
Mapping Program Orthophotography.