



SETBACK DISTANCES
SCALE: NTS

MAPPING GENERAL NOTES

1. THIS MAP AND SITE PLAN DRAWING IS BASED ON DATA PROVIDED BY MANCE ENGINEERING PARTNERS, P.C. FROM THE FOLLOWING SURVEYS:
 - a. SITE PLAN SURVEY FOR RAILROAD COUNTY, VERMONT
 - b. CORNER SURVEY FOR 1996 SURVEY
 - c. INTERIOR SURVEY FOR 1996 SURVEY
2. EXISTING LOTS AND ADJACENT PARCELS ARE SHOWN WITH PROPERTY LINES AND PROPERTY ADRESSES.
3. EXISTING PROPERTY LINES AND ADRESSES:
 - a. ADRESSES ARE SHOWN IN RED
 - b. PROPERTY LINES ARE SHOWN IN RED
4. PROPOSED LOT LINES ARE SHOWN IN YELLOW
5. PROPOSED LOT LINES AND ADRESSES ARE SHOWN IN YELLOW
6. EXISTING LOTS AND ADRESSES ARE SHOWN IN RED
7. EXISTING LOT LINES ARE SHOWN IN RED

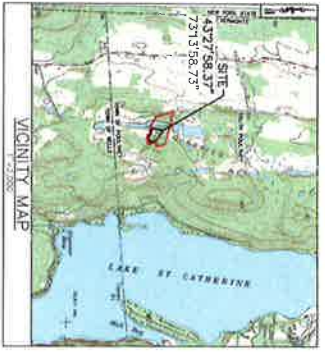
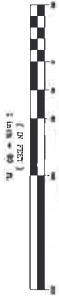
LEGEND

- PROPERTY LINE
- PROPERTY LINE ADJUNCTIVE
- 1/2" WATER CONTROL LINE
- 5" WATER CONTROL LINE
- 24" WATER CONTROL LINE
- 36" WATER CONTROL LINE
- 48" WATER CONTROL LINE
- 60" WATER CONTROL LINE
- 72" WATER CONTROL LINE
- 84" WATER CONTROL LINE
- 96" WATER CONTROL LINE
- 108" WATER CONTROL LINE
- 120" WATER CONTROL LINE
- 144" WATER CONTROL LINE
- 168" WATER CONTROL LINE
- 192" WATER CONTROL LINE
- 216" WATER CONTROL LINE
- 240" WATER CONTROL LINE
- 264" WATER CONTROL LINE
- 288" WATER CONTROL LINE
- 312" WATER CONTROL LINE
- 336" WATER CONTROL LINE
- 360" WATER CONTROL LINE
- 384" WATER CONTROL LINE
- 408" WATER CONTROL LINE
- 432" WATER CONTROL LINE
- 456" WATER CONTROL LINE
- 480" WATER CONTROL LINE
- 504" WATER CONTROL LINE
- 528" WATER CONTROL LINE
- 552" WATER CONTROL LINE
- 576" WATER CONTROL LINE
- 600" WATER CONTROL LINE
- 624" WATER CONTROL LINE
- 648" WATER CONTROL LINE
- 672" WATER CONTROL LINE
- 696" WATER CONTROL LINE
- 720" WATER CONTROL LINE
- 744" WATER CONTROL LINE
- 768" WATER CONTROL LINE
- 792" WATER CONTROL LINE
- 816" WATER CONTROL LINE
- 840" WATER CONTROL LINE
- 864" WATER CONTROL LINE
- 888" WATER CONTROL LINE
- 912" WATER CONTROL LINE
- 936" WATER CONTROL LINE
- 960" WATER CONTROL LINE
- 984" WATER CONTROL LINE
- 1008" WATER CONTROL LINE
- 1032" WATER CONTROL LINE
- 1056" WATER CONTROL LINE
- 1080" WATER CONTROL LINE
- 1104" WATER CONTROL LINE
- 1128" WATER CONTROL LINE
- 1152" WATER CONTROL LINE
- 1176" WATER CONTROL LINE
- 1200" WATER CONTROL LINE



Dig Safe System, Inc.
 It's Smart. It's Safe. It's Sure.
 1-888-858-5858

GRAPHIC SCALE



THESE PLANS WERE PREPARED BY MANCE ENGINEERING PARTNERS, P.C., A PROFESSIONAL ENGINEERING FIRM REGISTERED IN THE STATE OF VERMONT. THE ENGINEER HAS REVIEWED AND APPROVED THESE PLANS FOR THE PURPOSES INDICATED THEREON.



MANCE ENGINEERING PARTNERS, P.C.
 CIVIL ENGINEERING & LAND SURVEYING

196 CHEROKEE AVENUE, SUITE A-3
 BRATTLEBORO, VERMONT 05753
 TEL: 802-251-5207
 FAX: 802-251-5208
 WWW.MANCE.PC.COM

NO. OF SHEETS	TOTAL SHEETS

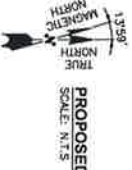
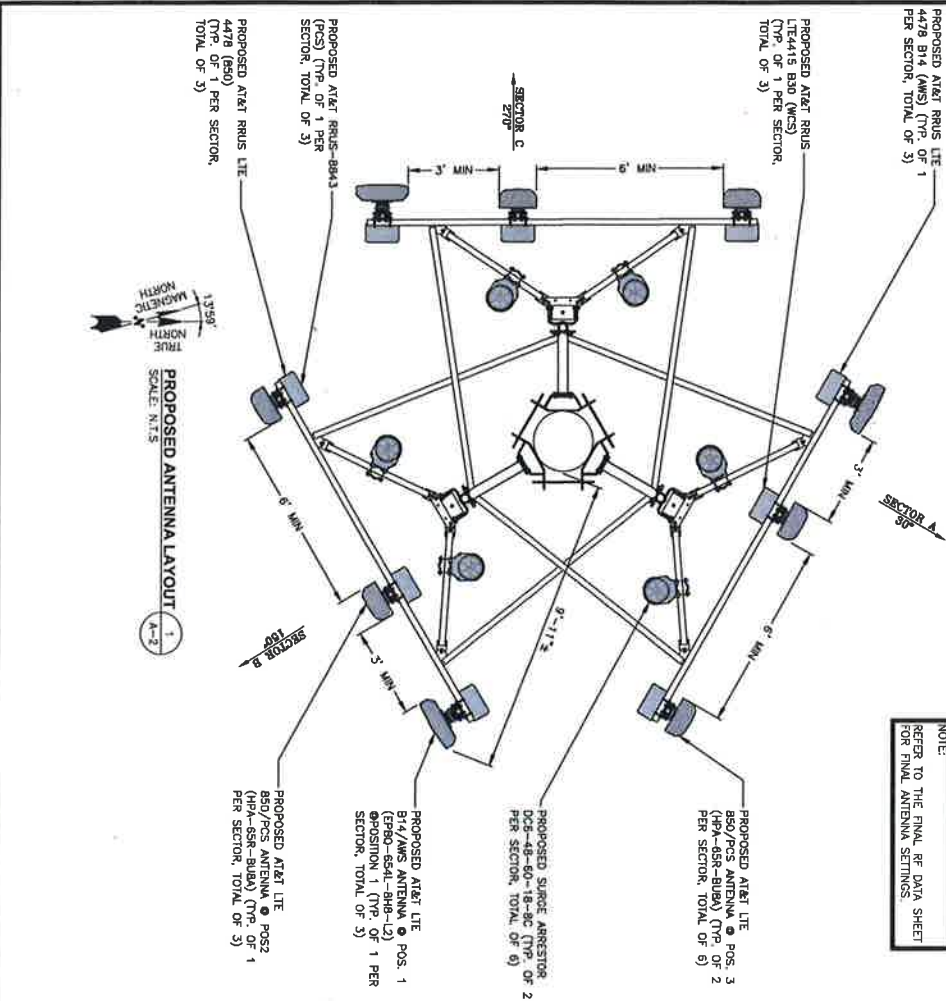
PROPOSED 500 KW SOLAR PROJECT
 HIGH ROAD, POULTRNEY VERMONT
45 DAY NOTICE - OVERALL SITE PLAN

SP-1

NOTE:
 PROPOSED POWER & TELCO
 TO COME FROM EXISTING
 SOURCES (ROUTING TO BE
 DETERMINED)

NOTE:
 AN ANALYSIS FOR THE CAPACITY
 OF THE ANTENNAS IS REQUIRED
 TO SUPPORT THE PROPOSED
 EQUIPMENT SHALL BE DETERMINED
 PRIOR TO CONSTRUCTION.

NOTE:
 REFER TO THE FINAL RF DATA SHEET
 FOR FINAL ANTENNA SETTINGS.



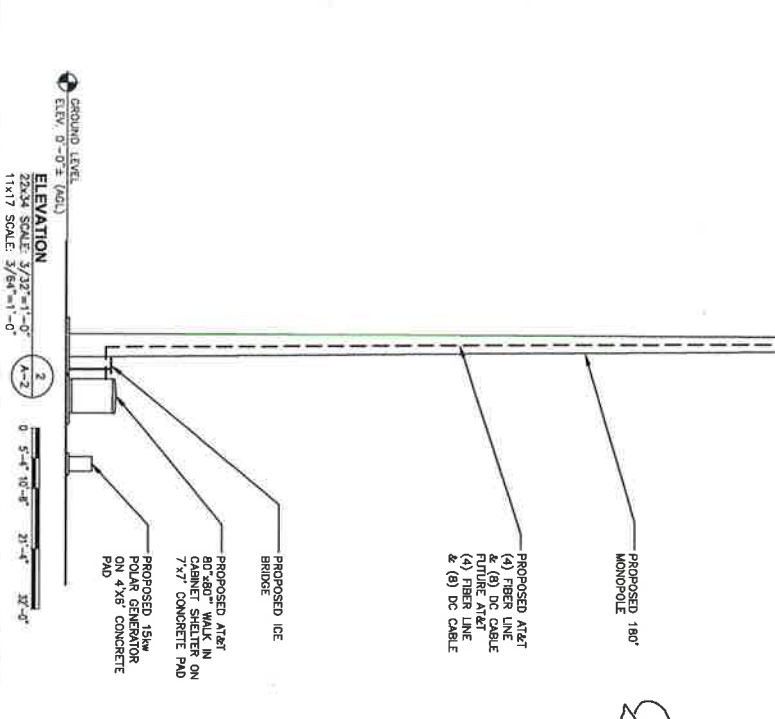
TOP OF PROPOSED MONOPOLE
 ELEV. 180'-0" ± (M.S.L.)

8' OF PROPOSED AT&T ANTENNAS
 ELEV. 176'-0" ± (M.S.L.)

PROPOSED RRU MOUNTED
 BEHIND ANTENNAS
 PER SECTOR,
 TOTAL OF 12)

PROPOSED AT&T ANTENNAS
 (TYP. OF 3 PER SECTOR,
 TOTAL OF 9)

PROPOSED SURGE ARRESTOR
 DCS-48-60-18-8C (TYP. OF 2
 PER SECTOR, TOTAL OF 6)



GROUND LEVEL
 ELEVATION 0'-0" ± (M.S.L.)

PROPOSED AT&T ANTENNAS (4) FIBER LINE & (8) DC CABLE FUTURE AT&T & (8) DC CABLE

PROPOSED ICE BRIDGE

PROPOSED AT&T 80' X 80' WALK IN CEMENT SHELTER ON 7' X 7' CONCRETE PAD

PROPOSED 150W POLAR GENERATOR ON 4' X 8' CONCRETE PAD

SITE NUMBER
 V1710356
 SITE NAME
 V1710355 BENSON

SITE ADDRESS
 24-15 STAGE ROAD
 FARMINGTON, CT 06031

SHEET TITLE
 ANTENNA LAYOUT &
 ELEVATION

SHEET NUMBER
 A-2

CHECKED BY: AT
 APPROVED BY: DMC

SUBMITTALS

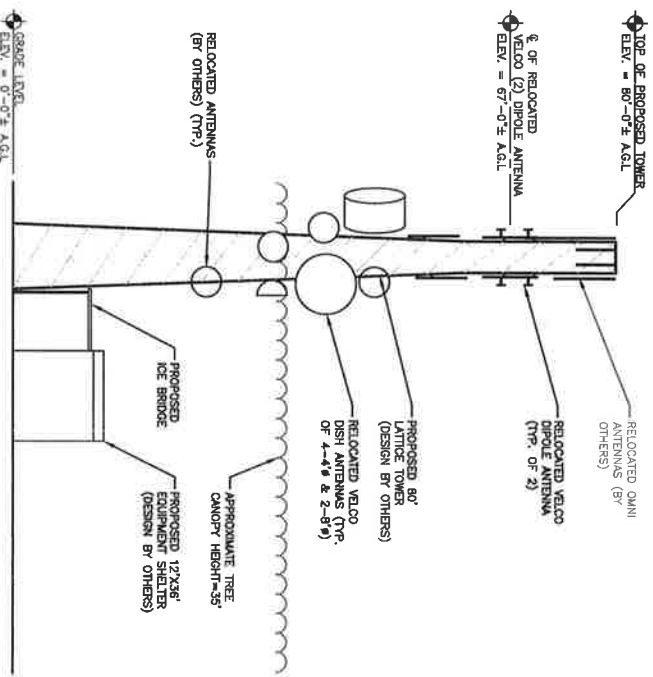
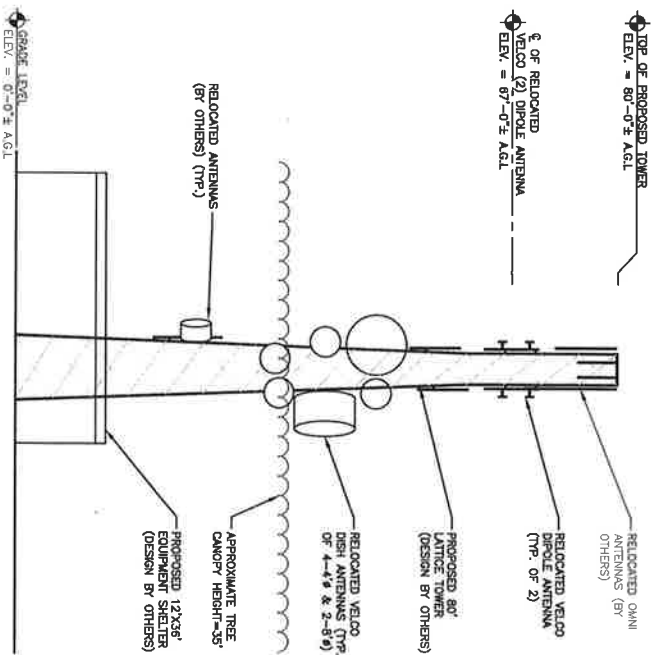
NO.	DATE	DESCRIPTION	BY
1	10/10/18	ISSUED FOR TENDERING	BT
2	09/27/18	ISSUED FOR REVIEW	BT

STATE OF VERMONT
 REGISTERED PROFESSIONAL ENGINEER
 NO. 80982
 CIVIL
 DEWEY J. CRENSHAW

HUDSON
 Design Group LLC
 750 WEST CENTER STREET
 WEST BRIDGEWATER, MA 02379

CENTERLINE
 580 COCHITUATE ROAD
 FRAMINGHAM, MA 01701

at&t



NORTHWEST ELEVATION
 22x34 SCALE: 1/8"=1'-0"
 11x17 SCALE: 1/16"=1'-0"

SOUTHWEST ELEVATION
 22x34 SCALE: 1/8"=1'-0"
 11x17 SCALE: 1/16"=1'-0"

H2G HUDSON
 Design Group LLC
 49 RECHORD DRIVE
 NORTH ANDOVER, MA 01854
 TEL: (978) 537-5533
 FAX: (978) 536-8338

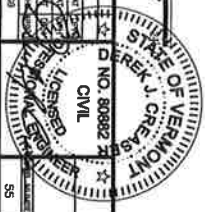
VELCO
 VERTICAL ELECTRIC
 COMMUNICATIONS
 366 PINNACLE RIDGE ROAD
 ROUNDAND, VT 05701

SITE NUMBER: 55
SITE NAME: PICO PEAK
 73 ALPINE DR
 KILLINGTON, VT 05751
 ROUNDAND COUNTY

AIRSMITH
 DESIGN
 AIRSMITH/PERKINS/ROBERTSON
 125 HIGH ROCK AVENUE
 SARATOGA SPRINGS, NY 12865

NO.	DATE	DESCRIPTION	BY	CHECKED BY	DESIGNER
1	12/26/19	ISSUED FOR PERMITTING	SS	AT	SS
2	04/23/19	ISSUED FOR PERMITTING	SS	AT	SS
3	02/26/19	ISSUED FOR REVIEW	SS	AT	SS

VELCO
 ELEVATIONS
 DRAWING NUMBER: A-2
 SHEET: 2



VELCO