

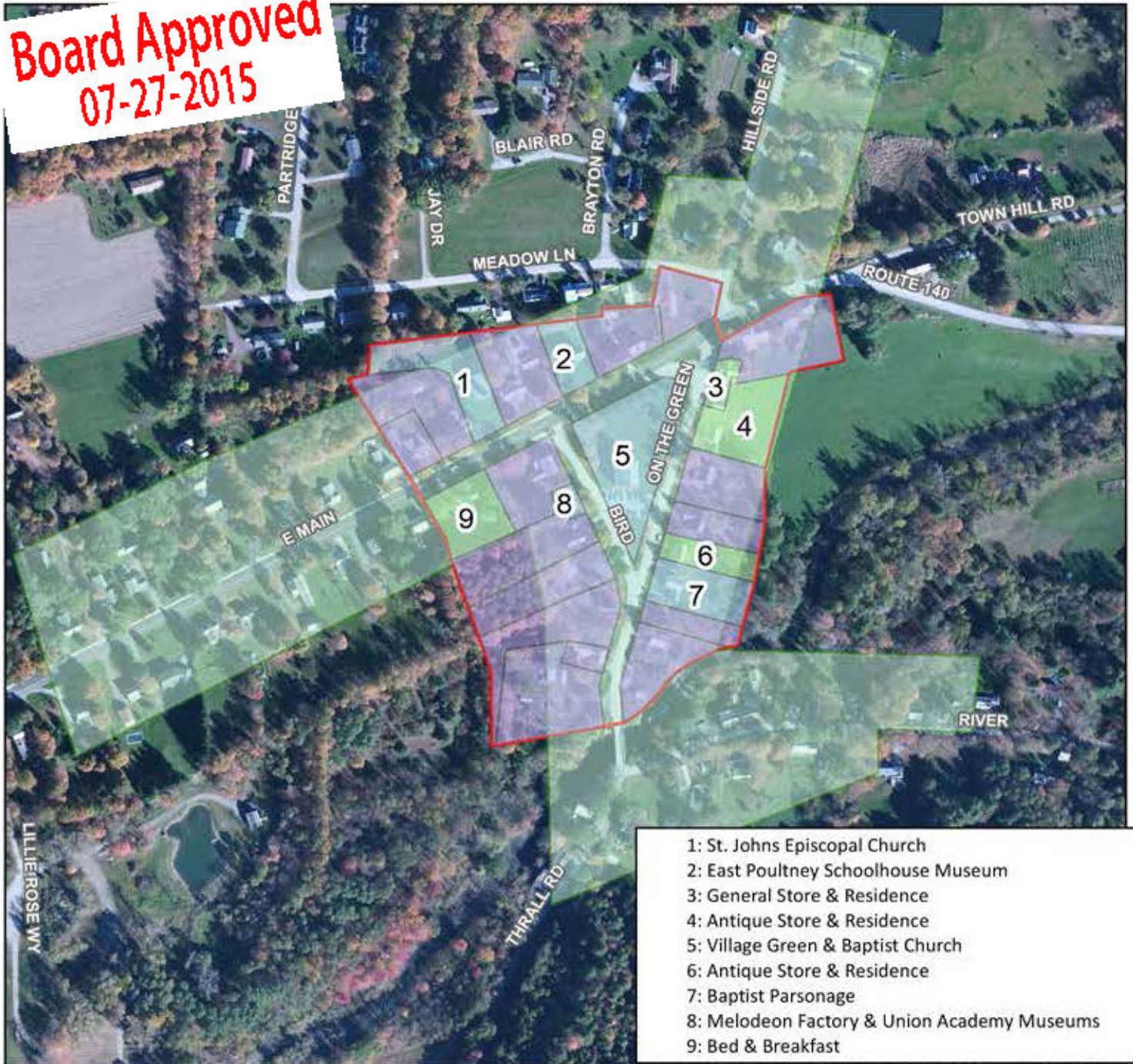
# POULTNEY, VERMONT

## East Poultney Village Designation

June 1st, 2015



**Board Approved  
07-27-2015**



- 1: St. Johns Episcopal Church
- 2: East Poultney Schoolhouse Museum
- 3: General Store & Residence
- 4: Antique Store & Residence
- 5: Village Green & Baptist Church
- 6: Antique Store & Residence
- 7: Baptist Parsonage
- 8: Melodeon Factory & Union Academy Museums
- 9: Bed & Breakfast

Civic/Public
  Mixed Use
  Residential
  Historic District (Approx.)
  E. Poultney Village Boundary

0 0.1 0.2 Miles

Vermont Coordinate System  
Transverse Mercator, NAD 83  
For Planning Purposes Only

